

Telegesis		TG-EAPE-PM-006-102	1
EAP-E		Product Manual	1.02

## **TG-EAPE-PM-006-102**

### **EAP-E and EAP-E-PA Ethernet Access Point PRODUCT MANUAL**



# Telegesis

Telegesis		TG-EAPE-PM-006-102	2
EAP-E		Product Manual	1.02

## Table of Contents

<b>1</b>	<b>INTRODUCTION .....</b>	<b>3</b>
1.1	Installation Requirements .....	3
1.2	LEDs .....	3
<b>2</b>	<b>ABSOLUTE MAXIMUM RATINGS .....</b>	<b>4</b>
<b>3</b>	<b>OPERATING CONDITIONS .....</b>	<b>4</b>
<b>4</b>	<b>DEVICE INSTALLATION AND OPERATION .....</b>	<b>5</b>
4.1	Creating Virtual COM Ports .....	7
<b>5</b>	<b>FIRMWARE CHANGES AND UPGRADES .....</b>	<b>11</b>
5.1	Device Reset and manually Entering the Bootloader .....	11
<b>6</b>	<b>SCHEMATICS .....</b>	<b>12</b>
<b>7</b>	<b>ORDERING INFORMATION .....</b>	<b>14</b>
<b>8</b>	<b>TRADEMARKS .....</b>	<b>15</b>
<b>9</b>	<b>DISCLAIMER.....</b>	<b>15</b>
<b>10</b>	<b>CONTACT INFORMATION .....</b>	<b>15</b>
<b>11</b>	<b>REFERENCES .....</b>	<b>15</b>

Telegesis		TG-EAPE-PM-006-102	3
EAP-E		Product Manual	1.02

## 1 Introduction

The EAP-E Ethernet access point allows access to an ETRX2 or ETRX2-PA wireless mesh networking module via Ethernet using the Lantronix® XPort® Direct™ serial to Ethernet bridge device. The Telegesis AT-Command interface - based on the EmberZNet meshing stack - can be easily accessed by the application software using telnet or by creating a virtual COM port using the supported Lantronix® CPR (COM Port Redirector) software for windows.

By default the EAP-E is set up to use DHCP for easy integration into most networks. Depending on the network and firewall configuration it is possible to connect to one or more local EAP-Es via the internet allowing remote interaction with local ZigBee® networks.

Using the Ember bootloader custom firmware and firmware upgrades can be downloaded via Ethernet or over the air. The SIF interface also allows the EAP-E to be used as a platform for firmware development and debugging.

The EAP-E access points also support the use of Ember's EZSP (Ember ZigBee® Serial Protocol) instead of the Telegesis AT Command interface.

### 1.1 Installation Requirements

- 5V-6V Power Supply (supplied separately)
- Cat5 Ethernet Cable
- 10/100 MBit Ethernet connectivity (ideally with DHCP server)
- Mains Socket

### 1.2 LEDs

The EAP-E has two LEDs situated on the RJ45 Ethernet connector:

#### 1. Green Link LED

- off: No link
- on: Link established

#### 2. Yellow Activity Led

- off: No activity
- on: Activity

Telegesis		TG-EAPE-PM-006-102	4
EAP-E		Product Manual	1.02

## 2 Absolute Maximum Ratings

Parameter	Min.	Max.	Units	Condition
Supply Voltage Vdd	-0.3	20 <sup>1</sup>	V	
Storage Temperature range	-40	85	°C	

**Table 1. Absolute Maximum Ratings**

The absolute maximum ratings given above should under no circumstances be violated. Exceeding one or more of the limiting values may cause permanent damage to the device.

## 3 Operating Conditions

Typical values at 25°C.

Parameter	Min.	Typ.	Max.	Units	Condition
Supply Voltage, Vdd	4.5	5	6	V	
Supply Current		235	275	mA	TX +3dBm
EAP-E		235	275	mA	RX
Supply Current		300	400	mA	TX +17dBm
EAP-E-PA		235	275	mA	RX
Operating ambient temperature range	0	25	70	°C	

**Table 2. Operating Conditions**

For radio features please refer to the ETRX2 and ETRX2-PA product manuals.

Dimensions: 114mm x 74mm x 25mm

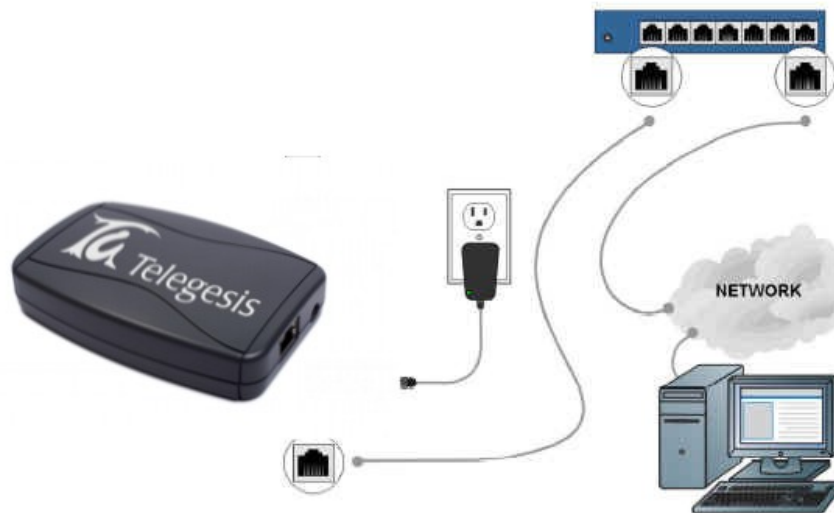
Weight: 95g

<sup>1</sup> Thermal shutdown may occur when exceeding the operating conditions. The unit will become operational again after allowing it to cool down.

Telegesis		TG-EAPE-PM-006-102	5
EAP-E		Product Manual	1.02

## 4 Device Installation and Operation

In order to install the device connect the EAP-E to a suitable power supply with the positive supply in the centre of the plug. After that connect it to your network hub.



**Figure 1: EAP-E Installation**

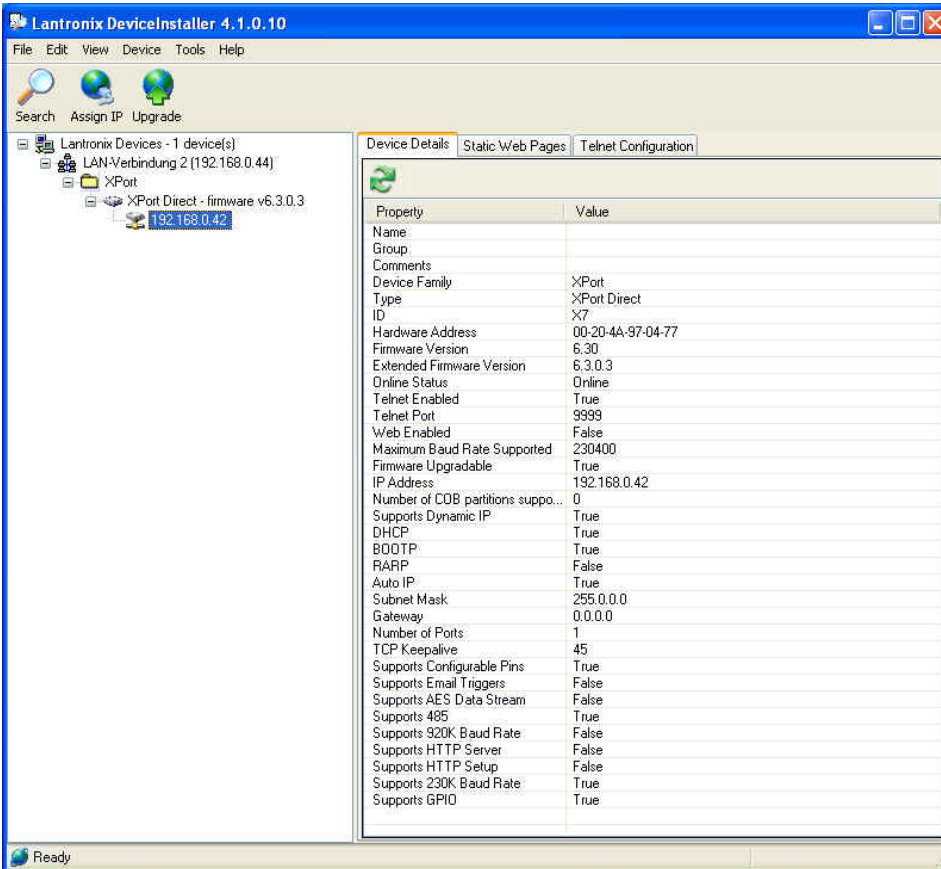
If a DHCP server is connected to your network the EAP-E will automatically acquire an IP address. In most cases the IP address obtained by the EAP-E can be found out by accessing the DHCP server, but there is also an easier way to do that.

The Lantronix® DeviceInstaller tool downloadable from [www.lantronix.com](http://www.lantronix.com) or included on a CD-ROM with your EAP-E can be used to identify EAP-E devices on the local network either with or without DHCP.

To do this simply follow these steps:

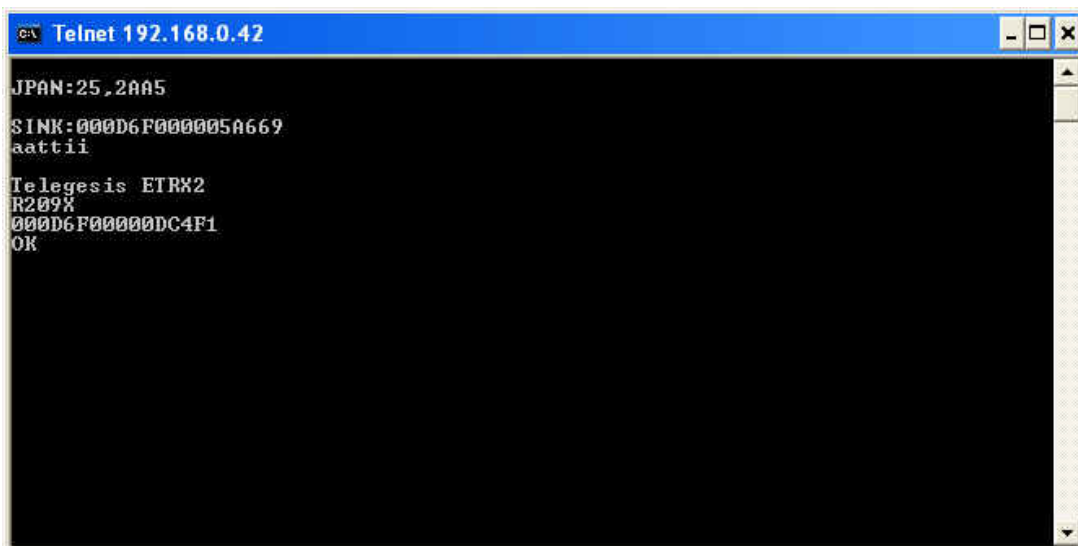
1. Install and execute the Lantronix® DeviceInstaller
2. If your PC has more than a single network adapter a message will prompt at start-up requiring you to specify which adapter connects to the local network to which the EAP-E is connected.
3. Click the Search button to find the EAP-E device on your network
4. If required a fixed IP address can now be assigned by pressing the “Assign IP” button and following the displayed wizard.
5. To test the communication with the EAP-E select the unit from the main window list and click **Tools->Ping**.

Once the IP address of the EAP-E is known it is possible to open a telnet session connecting to the built-in ETRX2. By default the port connecting to the ETRX2 is port number 10001 as shown in Figure 3. Please note that Figure 3 also shows a local command echo, which is why the characters of the command ATI are doubled.



**Figure 2: The Lantronix DeviceInstaller**

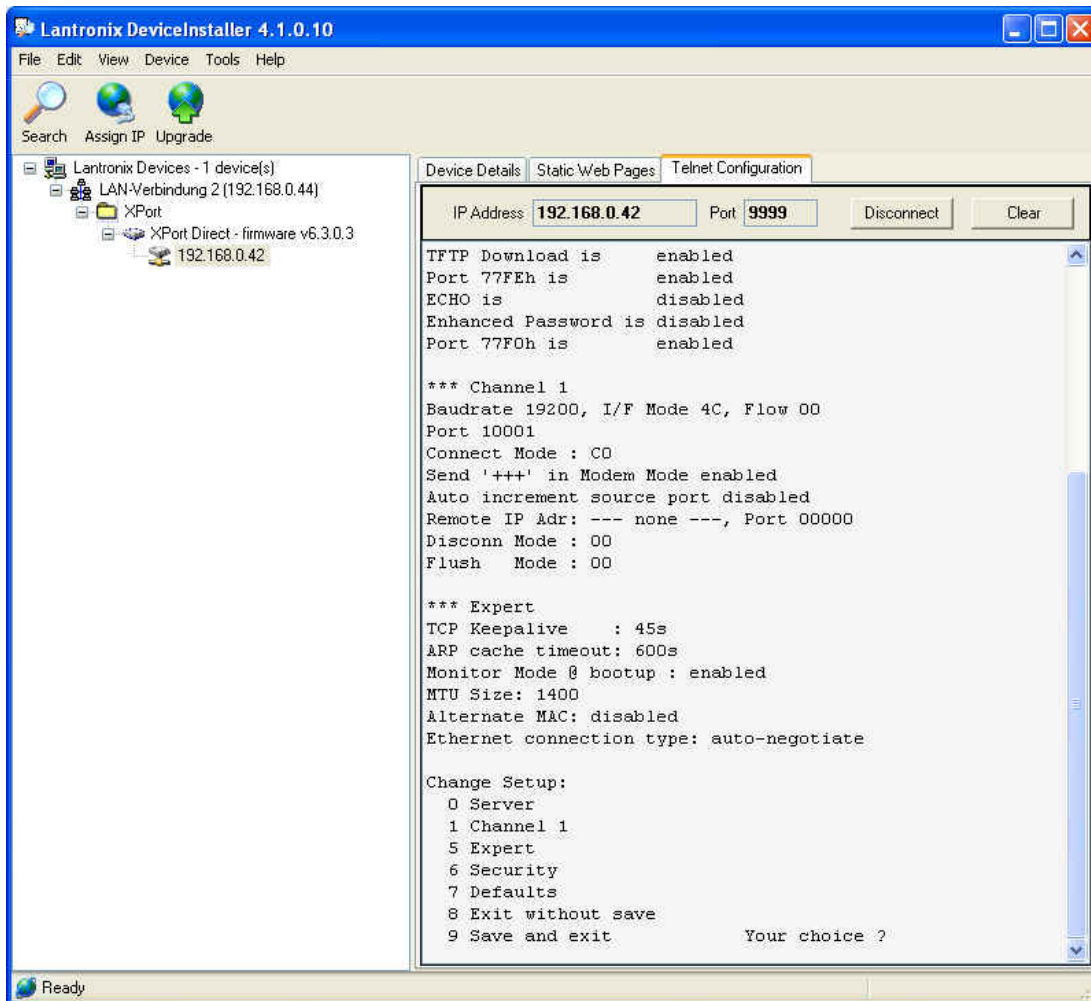
The default Port number of 10001 can be changed to any port number in order to allow multiple EAP-Es to be addressed via the internet. To do this the local router/firewall needs to be set up to forward incoming ports to the respective port of the corresponding local EAP-Es. All you need now to connect to your ZigBee® network via the internet is the remote IP address and the port number.



**Figure 3: A Telnet Session to the EAP-E**

In order to change the configuration data, such as the port number simply open a telnet connection to port number 9999, which is the configuration port and follow the setup menu. Alternatively you can use the Lantronix® DeviceInstaller to do this as shown in Figure 4.

Telegesis		TG-EAPE-PM-006-102	7
EAP-E		Product Manual	1.02



**Figure 4: EAP-E setup using Telnet to port 9999**

For example if you want to change the settings of the serial port speed press '1' followed by <enter>. Following on you are asked to specify the baudrate (19200), I/F Mode (4C), Flow (00), port number (10001), and other parameters. To enter a value for a parameter, type the value and press <enter>, or to confirm a current value, just press enter. When you are finished, save the new configuration (option 9). The unit reboots.

**Please note: When changing the default serial port settings (baudrate, flow control, parity, data bits), identical settings must be used for the Lantronix® XPort® Direct™ and the ETRX2, otherwise communication will not be possible.**

For a detailed description of the menu settings please consult the XPort® Direct™ user guide available from [www.lantronix.com](http://www.lantronix.com).

The DeviceInstaller is used to change the configuration of the EAP-E on the Ethernet side. In most cases there is no need to alter any of the Ethernet settings and so the DeviceInstaller can usually be ignored.

#### 4.1 Creating Virtual COM Ports

If accessing the serial port of the remote ETRX2 using Telnet is inconvenient for your application, potentially because you want your application to work with either the Telegesis ETRX2USB,

Telegesis		TG-EAPE-PM-006-102	8
EAP-E		Product Manual	1.02

ETRX2CF or the EAP-E in the same way, you can map the EAP-E to a virtual COM port in the same way as you can do with the USB and CF devices.

For this purpose Lantronix® provides a COM port redirector (CPR) software for use with their products. The Lantronix® CPR tool can be downloaded from [www.lantronix.com](http://www.lantronix.com) or is included on a CD-ROM with your EAP-E and supports Windows XP, Windows 2000 and Windows 2003 Server.

To create a virtual COM port follow these simple steps:

1. Download and Install the Lantronix® CPR
2. Make sure your EAP-E is installed and correctly configured
3. Execute the "CPR Manager".
4. Select **Device -> Search**. All EAP-Es in the local network will show up.
5. Select **COM Port -> Add and Remove**.
6. Select an available COM port number from 1 to 256 (or 1 to 63 if you use Telegesis Terminal).
7. Click on the new COM port in the left hand side of the window.
8. Double click on a Device on the bottom of the window
9. Make sure  **Use RFC 2217** is NOT checked
10. Click the Save icon.

During the installation and setup process you will be prompted whether to install a driver, which has not been signed by Microsoft. Select Yes.

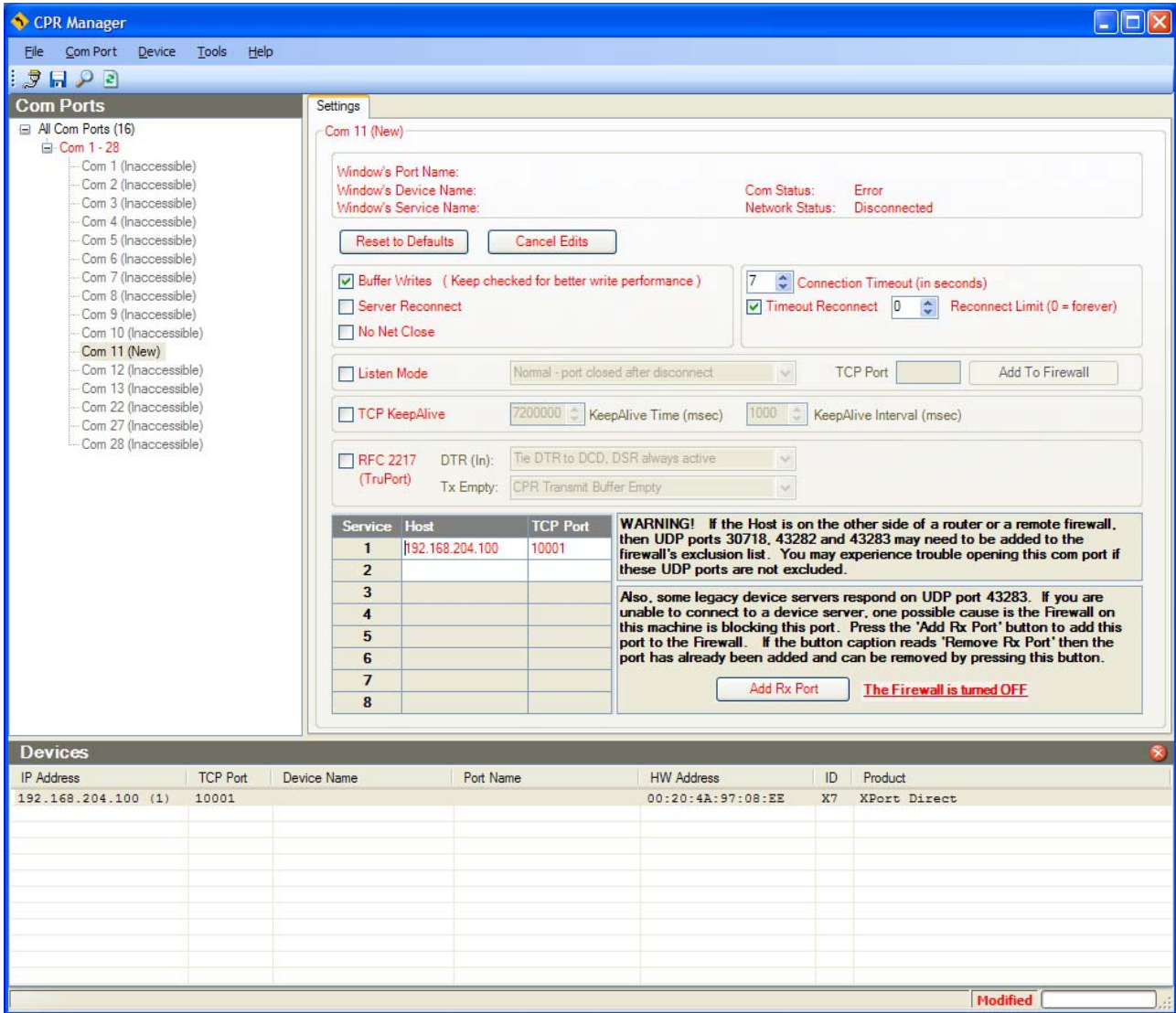


Figure 5. The Lantronix® CPR

After this process any application can access the embedded ETRX2 as though it was connected to the local machine's COM port as shown in Figure 6.

Telegesis		TG-EAPE-PM-006-102	10
EAP-E		Product Manual	1.02

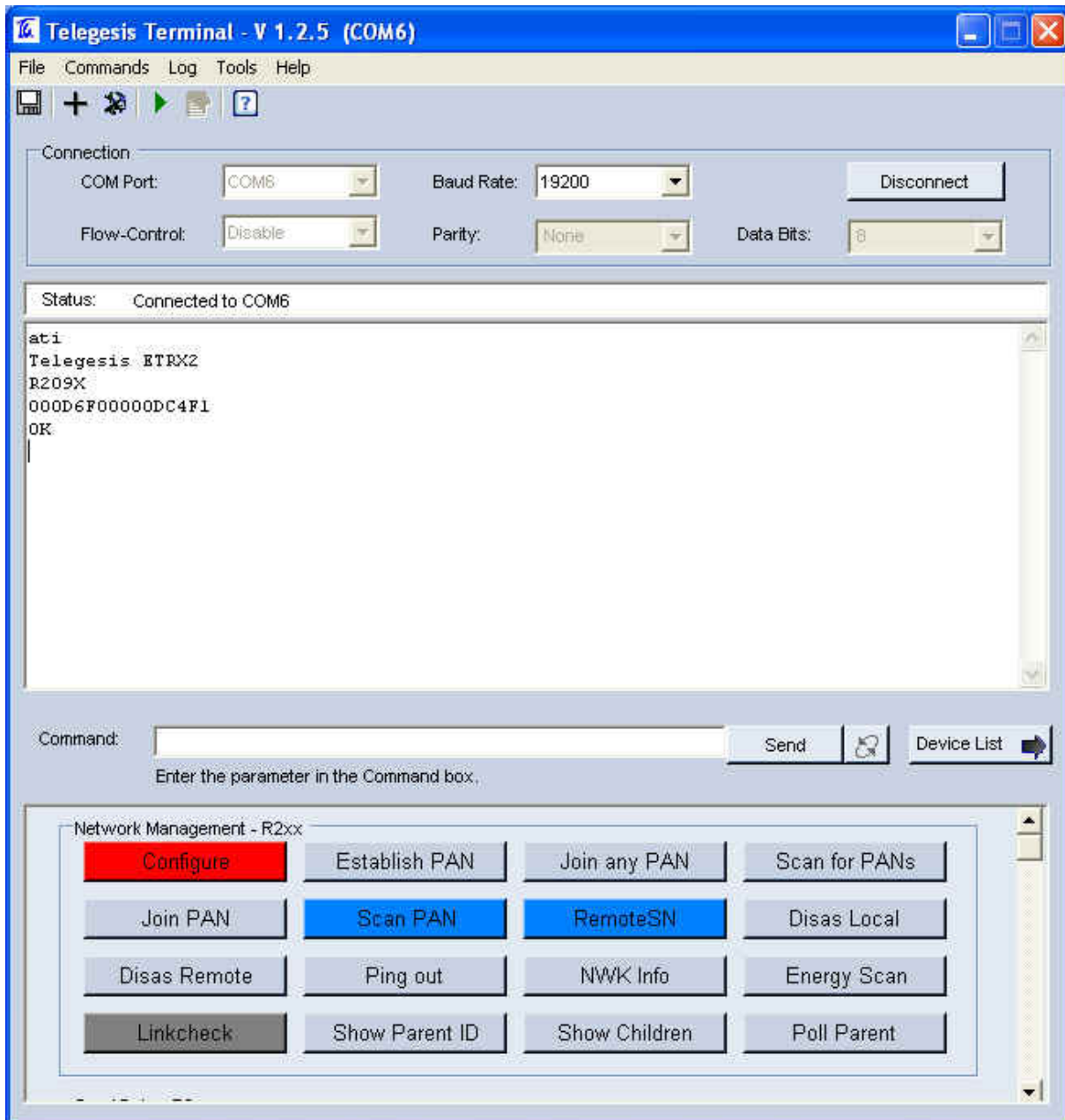


Figure 6: Telegesis Terminal accessing a EAP-E using CPR

Telegesis		TG-EAPE-PM-006-102	11
EAP-E		Product Manual	1.02

## 5 Firmware changes and upgrades

The firmware which is loaded onto the integrated ETRX2 Module can be upgraded over the air or via Ethernet using a virtual COM port as described in the Development Kit Manual. The procedure for bootloading is described in section 12 of the Telegesis Development Kit Product Manual (available from our website). If you want to bootload new firmware via the COM port, you must take care to follow this procedure, because the Telegesis firmware and the Ember bootloader run at different baud rates:

Start Lantronix DeviceInstaller, CPR Manager and Telegesis Terminal  
Set up a normal serial COM port connection from Telegesis Terminal to the EAP  
Execute AT+BLOAD  
Disconnect Telegesis Terminal  
Use DeviceInstaller to change Lantronix Ethernet module to 115200 baud, as described in section 4  
Connect Telegesis Terminal but stay at 19200 baud  
Hit <cr> and get the usual bootloader prompts  
Download new firmware at 19200  
Disconnect Telegesis Terminal  
Use DeviceInstaller to change Lantronix module back to 19200 baud  
Connect Telegesis Terminal  
Resume normal operation with new firmware

Alternatively access to the SIF programming interface is possible by removing the cover of the EAP-E access point. You can also use this interface for custom firmware development and real time debugging of your custom firmware.

Finally with the advent of EmberZNet3.x it is now possible to download the Ember EZSP (Ember ZigBee® Serial Protocol) as described in section 6 of the EM260 manual to the EAP-E. In case you require an EAP-E with pre-loaded EZSP firmware please contact [zigbeesupport@telegesis.com](mailto:zigbeesupport@telegesis.com).

### 5.1 Device Reset and manually Entering the Bootloader

In case the embedded ETRX2 needs to be reset manually the reset pin of the ETRX2 is connected to the CP1 pin of the Lantronix® XPort® Direct™ module in the same way as the A/D2 pin is connected to the CP2 pin. This allows hardware triggering of the Ember standalone bootloader, which can be used for firmware upgrades.

To learn how to access the CP1 and CP2 Pin of the Lantronix® XPort® Direct™ module please refer to the Lantronix® XPort® Direct™ user guide.

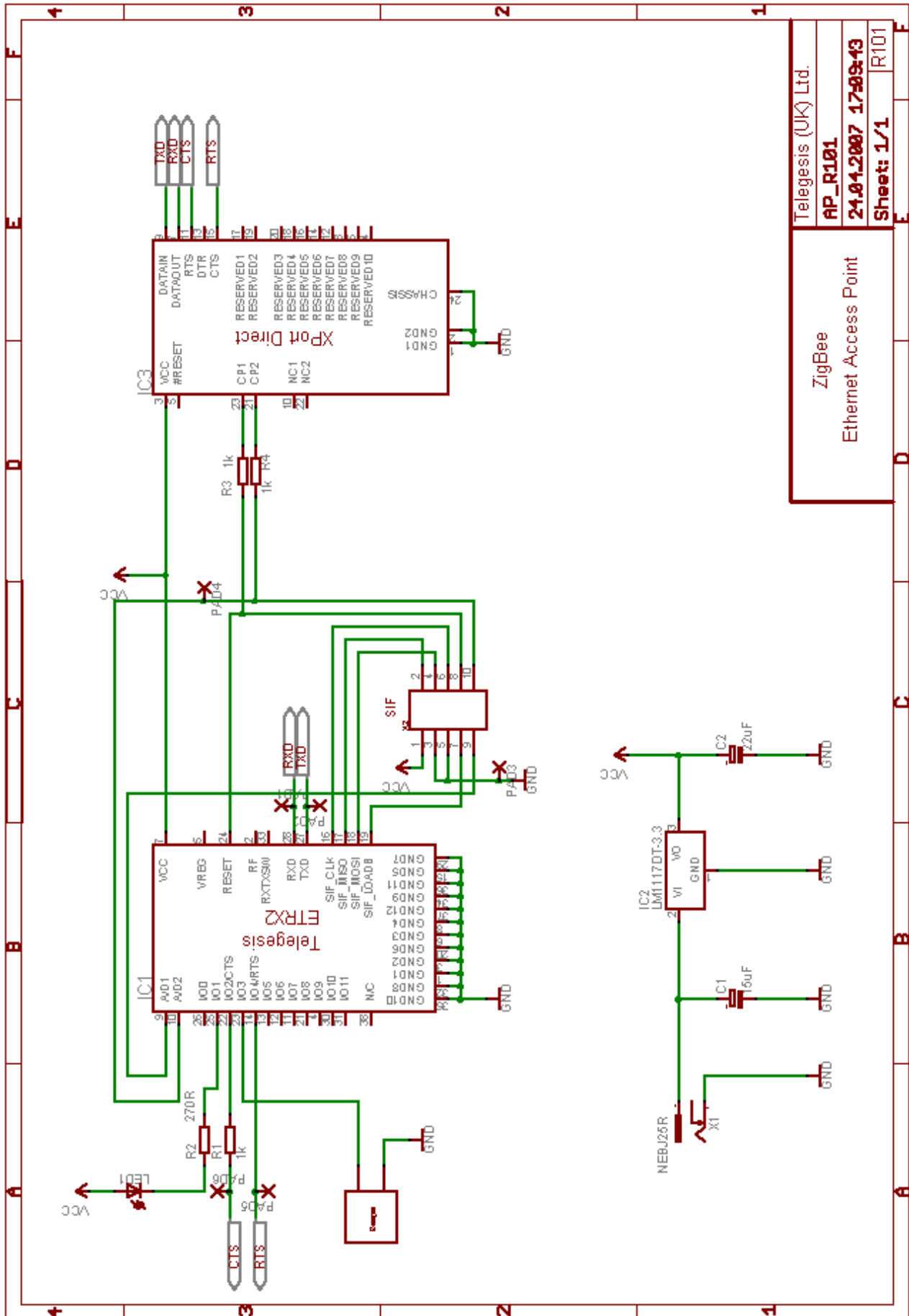
Telegesis		TG-EAPE-PM-006-102	12
EAP-E		Product Manual	1.02

## 6 Schematics

The schematic of the EAP-E is shown on the next page for reference.

LED1 and the beeper are future options, which are not fitted. The serial port including the handshaking lines as well as the reset and A/D2 lines can be accessed via labelled pads.

X2 is the SIF connector, which allows programming and custom firmware development and real time debugging in conjunction with the Ember InSight Adaptors and the accompanying development toolchain.



ZigBee  
Ethernet Access Point

Telegesis (UK) Ltd.  
**AP\_R101**  
**24.04.2007 17:09:43**  
Sheet: 1/1 R101

Telegesis		TG-EAPE-PM-006-102	14
EAP-E		Product Manual	1.02

## 7 Ordering Information

Ordering/Product Code	Description
EAP-E	<p>Access Point based on standard ETRX2</p> <ul style="list-style-type: none"> <li>• AT Style Command Interpreter</li> <li>• Integrated 2.4GHz Antenna</li> </ul>
EAP-E-PA	<p>Access Point based on ETRX2-PA</p> <ul style="list-style-type: none"> <li>• AT Style Command Interpreter</li> <li>• Integrated 2.4GHz Antenna</li> </ul>
ETRX2DVKA	<p>Development Kit with:</p> <ul style="list-style-type: none"> <li>• 1 x ETRX2HW Module with Board to Board Connector</li> <li>• 1 x ETRX2DV Development Board</li> <li>• 2 x ETRX2 Modules soldered to</li> <li>• 2 x ETRX2MCB Module Carrier Boards</li> <li>• 2 x AA Battery Holders with Leads &amp; Connector Plugs</li> <li>• 1 x USB Cable</li> </ul>
ETRX2DVKA-Plus	<p>Telegesis Development Kit with:</p> <ul style="list-style-type: none"> <li>• 1 x ETRX2DV Development Board</li> <li>• 1 x ETRX2HW Module with a fitted Harwin</li> <li>• 1 x ETRX2MCB Carrier Boards fitted with ETRX2 modules</li> <li>• 1 x ETRX2-PA MCB with ETRX2-PA Module</li> <li>• 1 x AA Battery Holders with leads</li> <li>• 1 x USB cable</li> <li>• 1 x ETRX2USB USB stick</li> <li>• 1 x ETRX2HRHW-PA Module with Hirose connector for external antenna and Harwin</li> <li>• 1 x ½ Wave antenna</li> <li>• 1 x 100mm cable to connect module to antenna</li> </ul>
ETRX2	<p>Telegesis Wireless Mesh Networking Module with Ember ZigBee® Technology:</p> <ul style="list-style-type: none"> <li>• Telegesis AT Style Command Interpreter and</li> <li>• Ember's EmberZNet2.x stack</li> <li>• Integrated 2.4GHz Antenna</li> </ul>
<p><b>Notes:</b></p> <ul style="list-style-type: none"> <li>• Customers' PO's must state the Ordering/Product Code.</li> <li>• There is <u>no</u> "blank" version of the ETRX2 Module available. All Modules carry both the EmberNet Stack and the Telegesis AT style Command Layer. Where customers wish to program custom firmware they can simply overwrite the existing firmware</li> <li>• Please contact Telegesis if you require additional AT style commands or specific integration assistance.</li> </ul>	

**Table 3. Ordering Information**

Telegesis		TG-EAPE-PM-006-102	15
EAP-E		Product Manual	1.02

## 8 Trademarks

All trademarks, registered trademarks and products names are the sole property of their respective owners.

## 9 Disclaimer

Product and Company names and logos referenced may either be trademarks or registered trademarks of their respective companies. We reserve the right to make modifications and/or improvements without prior notification. All information is correct at time of issue. Telegesis (UK) Ltd does not convey any license under its patent rights or assume any responsibility for the use of the described product

## 10 Contact Information

Website: [www.telegesis.com](http://www.telegesis.com)  
E-mail: [sales@telegesis.com](mailto:sales@telegesis.com)

Telegesis (UK) Limited  
Marlow Business Centre  
84 Station Road  
Marlow  
Bucks. SL7 1NX  
UK

Tel: +44 (0)1628 894347  
Fax: +44 (0)1628 894333

## 11 References

Telegesis - [www.telegesis.com](http://www.telegesis.com)

Ember - [www.ember.com](http://www.ember.com)

Lantronix - [www.lantronix.com](http://www.lantronix.com)